

Specification

Lithium Polymer Battery Pack (LP573450) 980mAh 3.7V with Protection Circuit Module (PCM)
 This data sheet describes the requirements and properties of lithium polymer rechargeable battery pack manufactured by AKYGA

Mechanical Characteristics

Type number: LP573450
 Designation IEC system: Lithium polymer battery pack
 Length: 50 ± 0.4 mm
 Width: 34 ± 0.4 mm
 Thickness: 5.7 ± 0.2 mm
 Cable: 50.0 ± 3 mm (26AWG UL 1007)
 Weight approx: 20.0g

Electrical Specification

Rated capacity: 980mAh min, 1060mAh typ.
 Nominal voltage: 3.7V
 Max. operating voltage range: 3.0V to 4.2V
 Charge voltage: 4.2 ± 50 mV
 Initial charge current: Standard charge: 490mA
 Rapid charge: 980mA
 Charging cut-off (A or B)
 A) By time: Standard charge: 7 hours
 Rapid charge: 4 hours
 B) By min. current: 19.6mA
 Max continuous discharge current: 980mA
 Internal impedance (1kHz): approx 40mOhm
 Exp. cycle life: >500 cycles >70% of initial cap. (0.5C/0.5C)
 Cell protection
 Overcharge detection: 4.325 ± 25 mV
 (0.5 to 2.0 sec. delay, resume 4.075 ± 50 mV)
 Overdischarge detection: $2.50V \pm 80$ mV
 (6.25 to 250msec. delay, resume $2.9V \pm 100$ mV)

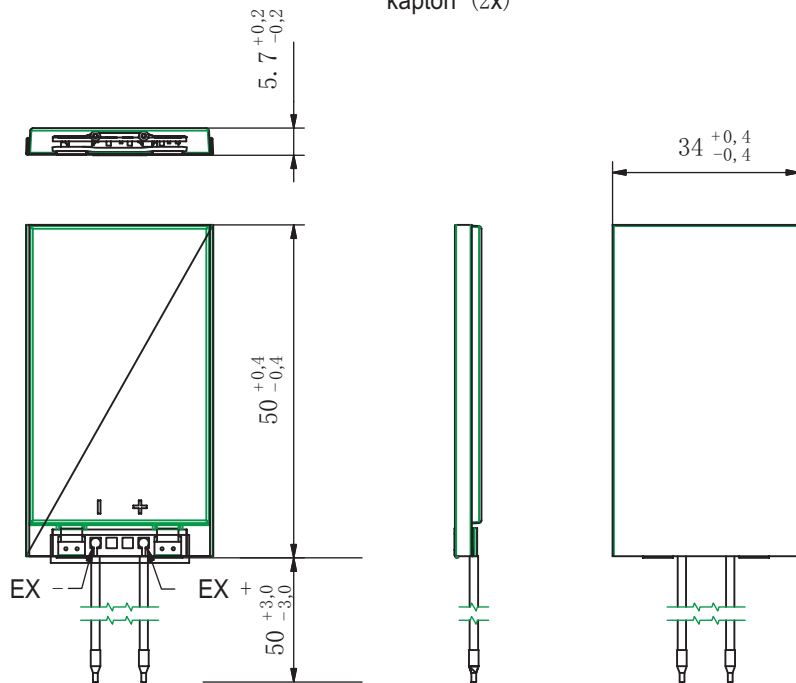
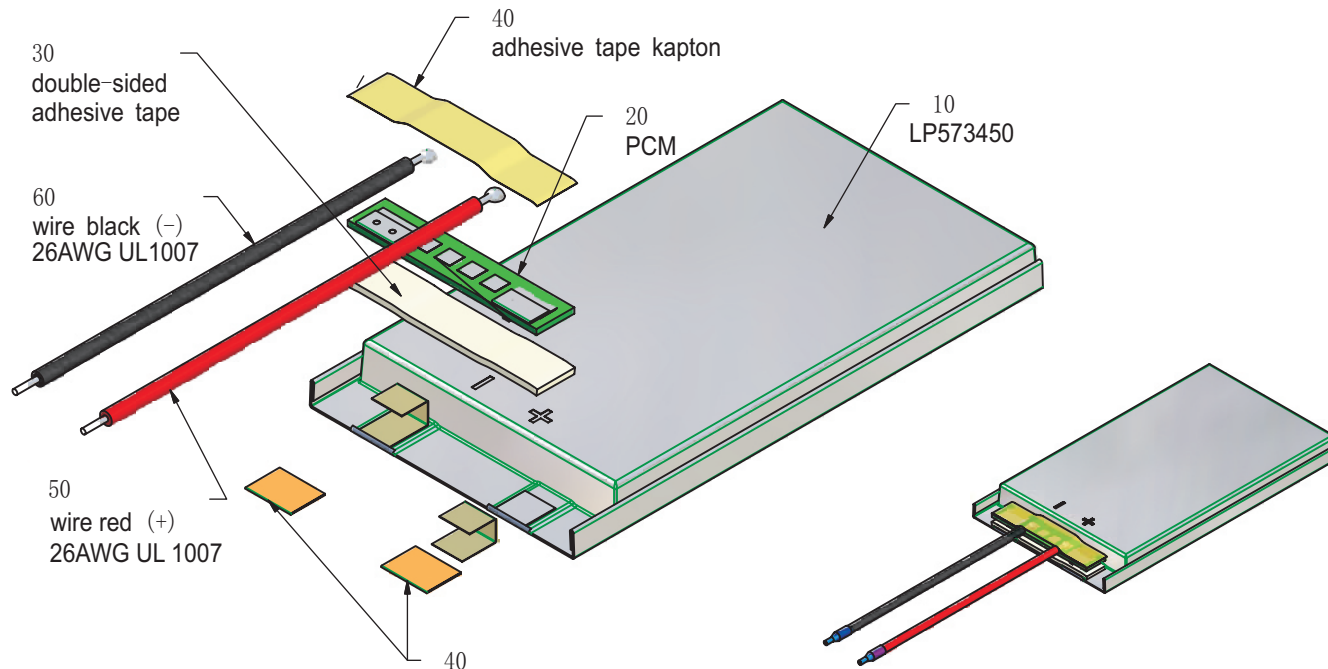
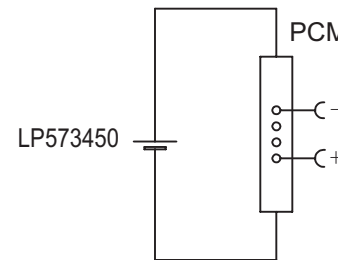
Ambient conditions

Temperature range
 Charge: 0 to +45°C
 Discharge: -20 to +60°C
 Charge retention/Storage: 1 year at -20 to 20°C >70%
 3 month at -20 to 45°C > 70%
 1 month at -20 to 60°C > 70%

Safety

Please follow handling and Safety Precautions Poliflex.

Circuit diagram



Index	Alteration		Date	Name
Projection:				
Mae in mm All dimensions in mm		Freimatoleranzen Generalltoleranzen		Diese Mae werden besonders geprüf This dimensions are considered inspectable
Als Betriebsgeheimnis anvertraut, alle Rechte vorbehalten.		up to 6 up to 30	* 0,1 * 0,2	Material 6645178 4786
Proprietary data, company confidential, all rights reserved.		up to 30 up to 100 over 100	* 0,3 * 0,5	Date Name Erst./Orig. 23.04.2013 Xie Qingfang Bearb./Desig. Gepr./Check 23.04.2013 Guo Daxia
Benennung/Designation LP573450			Zchnng. / Dwg. Nr. 3 FD_3255_70	Index
Origin:				

